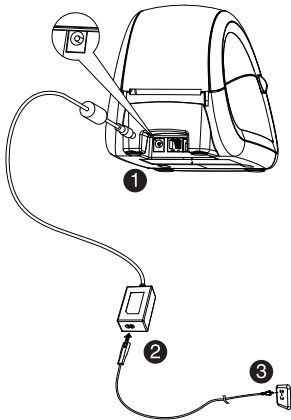
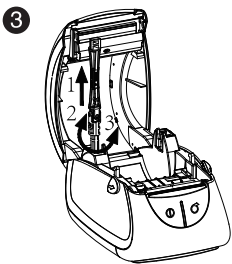
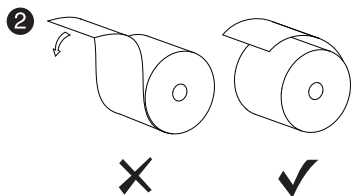
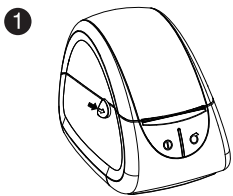


LPQ58/LPQ80 Quick Start Guide

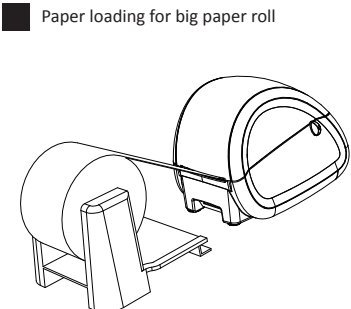
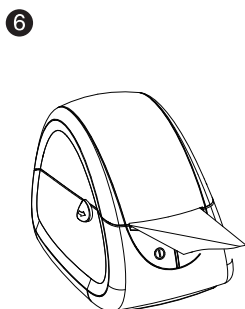
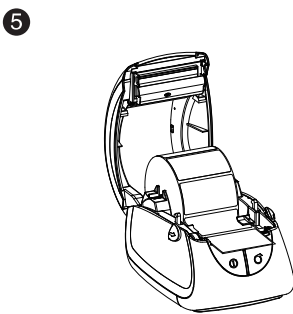
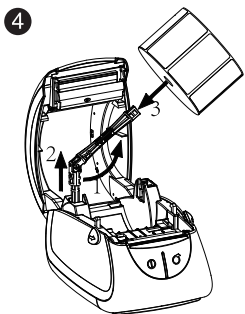
1 Power Supply



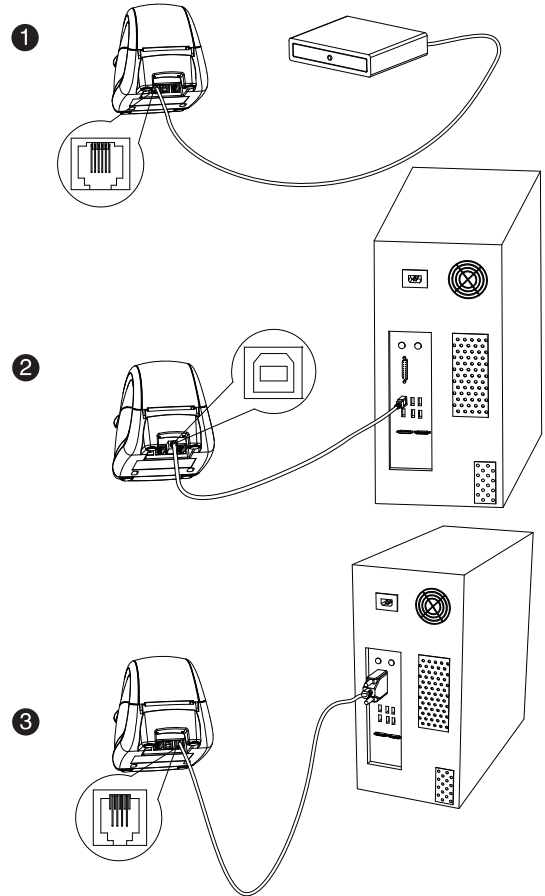
2 Paper Loading



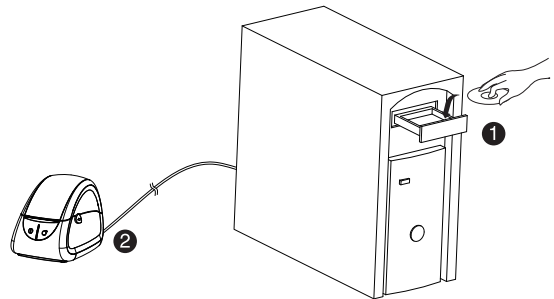
1. Push forward the cover-open buttons with both hands then lift upward the top cover open.
2. Load paper roll as indicated image: open paper roll shaft as left image, load paper roll with 0.5 inch core, turn the shaft around 90 degree clockwise, load paper roll with 1 inch core, or turn the shaft around 90 degree counter-clockwise, pls load paper roll with 1.5 inch core.
3. Load the paper roll and fasten the shaft, pull out the paper end, open the paper guide to the max width and load the paper end, then adjust the paper guide right for paper width.
4. Close the top cover.



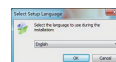
3 Interfaces



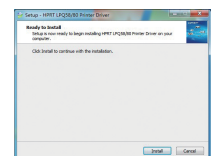
4 Driver



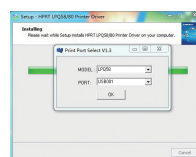
1



2



3



4



5 Parameter Setting

1.Please follow below steps to enter parameters setting mode:

- Press **【POWER】** button three times- - ①
- Press **【FEED】** button one time- - ②
- Finish the above two steps within 2s after power on

2. When printer succeeds in entering the parameters setting mode, it prints the following contents and enters the first parameter setting – baud rate setting.

enter setting mode:
setting baud:
baud = 9600

Optional baud rates: 9600, 19200, 38400, 57600, 115200.

It prints current baud rate 9600 and please press **【POWER】** button to select the baud rate required. Press **【POWER】** button one time, the printer prints the current baud= *****.When the printer prints the baud rate required, press the **【FEED】** button to quit, then enter the second setting – paper type setting.

3. After entering paper type setting mode, it prints the following contents:

setting paper type:
paper type: auto

Optional paper type: receipt, label and auto.

If user wants to change the paper type, press **【POWER】** button to select.Press **【POWER】** button one time, and the printer prints the current paper type: *****.When the printer shows the paper type required, press **【FEED】** button to quit. The printer enters the third setting – print density setting.

NOTE: ■ Default media/ paper type is auto. Under auto mode, printer feeds paper automatically to identify the media type after power on.

- The movable paper sensor must be fastened in the correct position to make sure that paper sensor can detect the paper status and label location under label printing mode.
Correct position: the little triangle on movable paper sensor frame must be opposite to the one on the printer guide frame.

4. After entering density setting mode, it prints the following contents:

setting density:
density:middle

Optional density: high, middle and low.

If user want to change the density, press **【POWER】** button to select . Press **【POWER】** button one time, and the printer prints the current density : ***** . When the printer shows the density required, press **【FEED】** button to quit. The printer enters the forth setting – print width setting.

5. After entering print width setting mode, it prints the following contents:

set print width mode:
print width: default

Optional printing width: default (384dots) and full area (448dots).

If user want to change the print width, press **【POWER】** button to select . Press **【POWER】** button one time, and the printer prints the current print width : ***** . When the printer shows the print width required,press **【FEED】** button to quit, and the printer enters the next protocol setting mode.

6. After entering protocol setting mode, it prints the following contents: (NOTE: The setting mode is only available when you use label paper.)

set protocol
protocol: TSPL

Optional protocol: TSPL, ESC/POS.

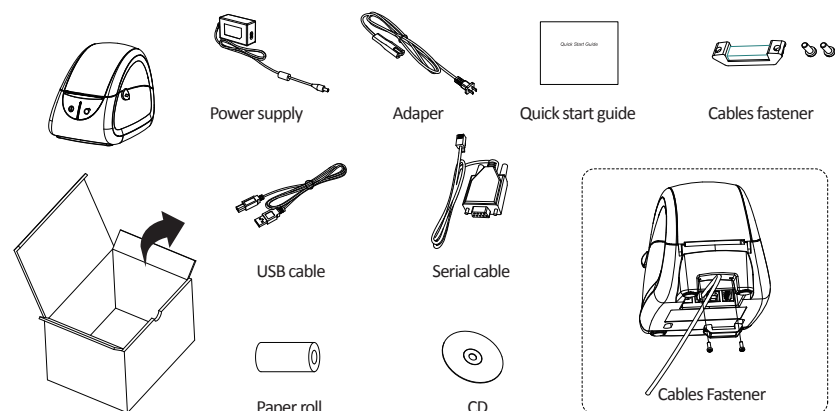
Users can change the protocol by pressing **【POWER】** button one time, and press **【FEED】** to confirm the chosen protocol. After this setting, printer will automatically power off.

NOTE: ■ When receipt paper is used , only ESC/POS protocol is working.

- When label paper is used, protocol type can be set to either ESC/POS or TSPL.

7.Power on and the above settings will take effect.

6 Packing List



ADD: Room 305A, Angye Building, Pioneering Park,

Torch High-tech Zone, Xiamen, China 361009

TEL: +86—(0)592-5885993

FAX: +86—(0)592-5885992

NOTE: Before power-on, please carefully read user manual
(in the CD) and quick start guide.